

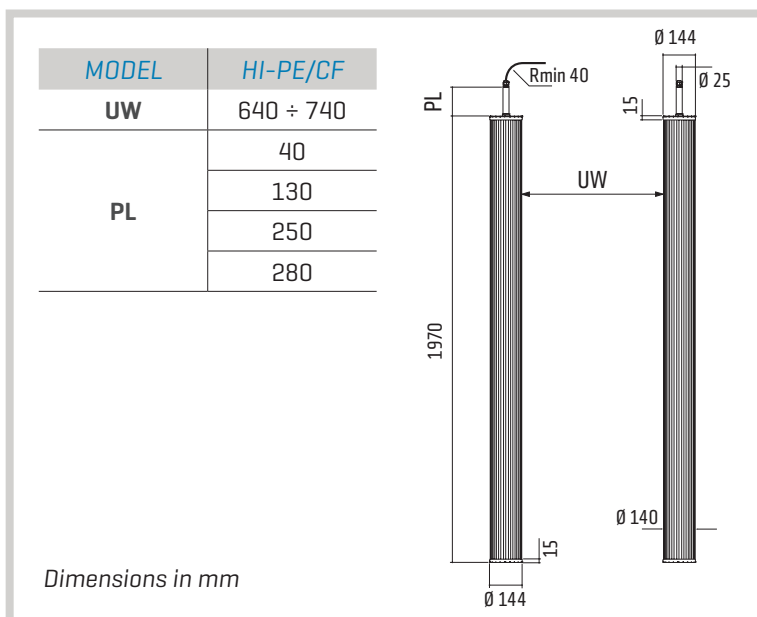
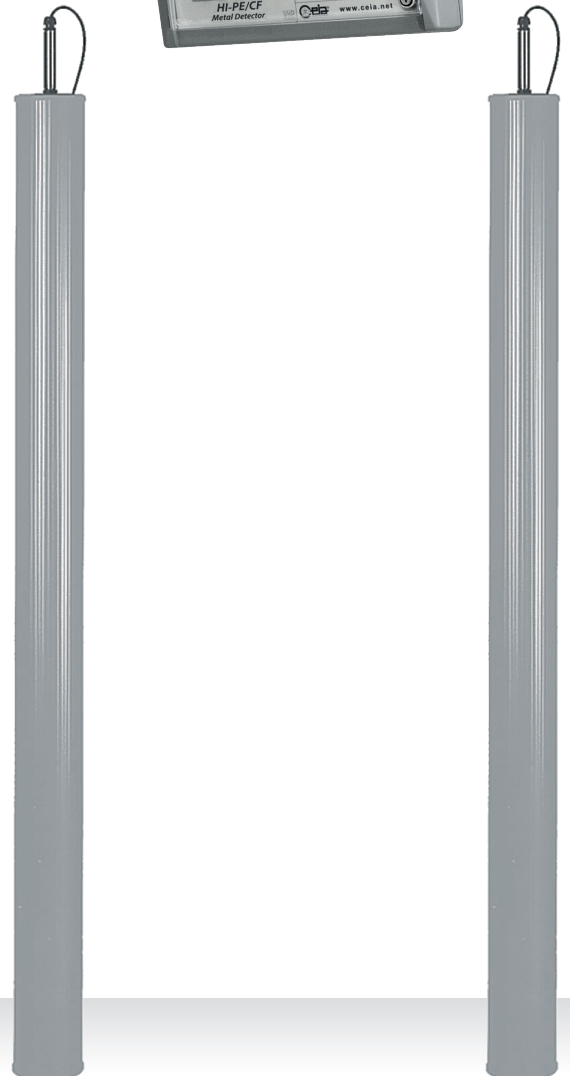


HI-PE/CF

VERY HIGH DISCRIMINATION METAL DETECTOR

- Cutting-edge discrimination technology allows personal effects to be ignored, creating rapid transit flow
- International Standards: Direct selection of the International Security Standards
- High immunity to electromagnetic and mechanical interference
- All functions programmable and controlled by a microprocessor
- Programming: via built-in keypad and RDU or RS232/RS485 serial connection to PC or computer network
- No need for initial or periodic calibration
- Easy maintenance

ELECTRONIC CONTROL UNIT
SEPARATED FROM THE ARCHWAY



www.ceia.net

Threat Detection through Electromagnetics

CEIA reserves the right to make changes, at any moment and without notice, to the models (including programming), their accessories and options, to the prices and conditions of sale



The transit of personal metal belongings in common daily use through Metal Detector checkpoints generates signals which often exceed those of some types of firearm available on the market. **Discrimination of these by the Metal Detector therefore becomes a necessary condition for establishing access systems with high flow rates.**

As a solution to this problem, **CEIA offers the HI-PE/CF Metal Detector** which, with its detection functions based on an innovative signal analysis system, raises the threshold of discrimination between medium-sized firearms and personal effects to a level up to 400% above that standard Metal Detectors.

HI-PE/CF Metal Detector can be also programmed to allow high-throughputs screening of undivested people for the detection of large metallic threats providing an extremely low nuisance alarm rate caused by personal metal belongings. The design of the **HI-PE/CF Metal Detector** allows its integration in existing structures and covert operations.

SPECIFICATIONS

ALARMS

Acoustic signal	Buzzer - 90 dBA [1 m]
Relay outputs	NO, NC, C exchange contact - 1 A - 24 Vdc
Reset	PP input, automatic or manual, N.C. contact
Inhibition	INI input, N.O. contact
Auto diagnosis	Embedded, with intermittent acoustic signal

CERTIFICATION AND COMPLIANCE

Compliant with the NILECJ-0601-00 standards for all security levels
Compliant with the applicable electromagnetic Standards on Human Exposure and Pacemaker Safety
Compliant with applicable International Standards for electrical safety and EMC
Harmless to magnetic media [CD, tapes, etc.]

INSTALLATION DATA

Power Supply	20 ÷ 30 Vdc, 1 A MAX
Inputs	RS-232C interface for the connection with a terminal, a computer or an external modem
	RS-232C interface for the network connection with other CEIA Metal Detectors
Temperature	-15°C to +70 °C
Relative Humidity	0 to 95% [without condensation]
Control unit	380 x 157 x 82 mm / 1,2 kg

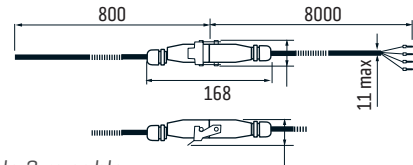
ACCESSORIES / OPTIONS

Metallic test samples

OPTIONS

TYPE OF CABLE

0,8 m cable with connector, with 8 m extension



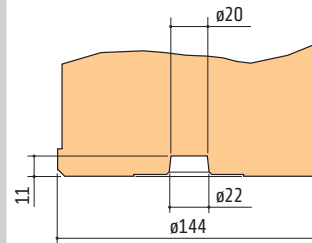
Simple 3 m cable



ANCHORING

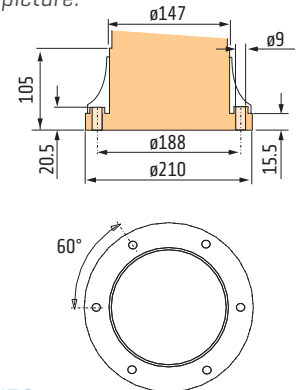
Anchoring without flange

Fixing via insertion of central conical support fixed to floor.



Anchoring with flange

Fixing via a flange with holes as shown in the picture.

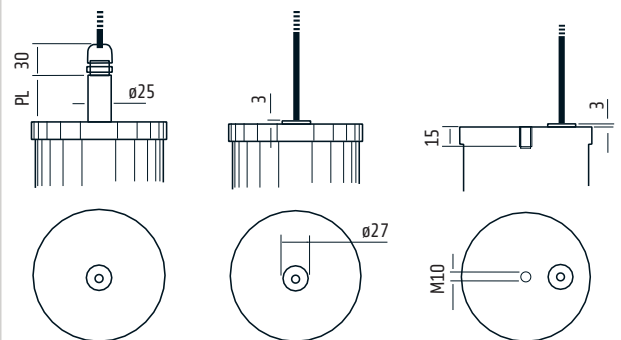


TOP FIXING AND CABLE EXITS

Fixing via locking of the metal tube. The cable leads out of the middle of the tube.

Fixing via direct locking of the column body. Axial cable exit.

Fixing via central screw M10x12. Off-centre cable exit.



Dimensions in mm



Zona Industriale 54/G, 52041 Vicinaggio - Arezzo [ITALY]

Tel.: +39 0575 4181 • Fax: +39 0575 418298 • E-mail: infosecurity@ceia-spa.com