

Features & Benefits

Polar-MP Multipass Freezer	MP 3x6x0,6	MP 3x6x0.915	MP 3x6x1.22
Overall Length (mm)	8250	8250	8250
Overall Width (mm)	2050	2350	2650
Height (Open, mm)	3450	3450	3450
Inlet Height (mm)	1400	1400	1400
Outlet Height (mm)	550	550	550
Usable Belt Width (mm)	660	915	1220
Belt Length (m)	18	18	18
No. of Tiers	3	3	3
Product Clearance (mm)	160	160	160
Cooling Medium	LIN or CO2	LIN or CO2	LIN or CO2
Power Supply	3x400V	3x400V	3x400V

Note: Based on 6M body. Length increases by 1M increments.

LAYOUT OPTIONS

Typical layout features odd number of tiers with entrance and exit at opposite ends. More than 3 tiers available. Maximum available body length is 16 meter.



OPTIONS AND ACCESSORIES

- Side Wall Recirculation Fans
- Stainless Steel Motors & Gearbox
- Stainless Steel Fan Motors
- Vapor-Retention Curtains
- Stainless Variable Speed Fans
- Custom Design Units Available
- Remote Electrical Panel
- Clean-in-Place System
- Variable Speed Exhaust Blower

STANDARD FEATURES AND BENEFITS

- Siemens PLC Controls
- Stainless Welded Structure (Easy Clean)
- Proportional Controls
- Ethernet Ready
- LIN or/and LCO2 as Refrigerant
- Variable Belt Speed for All Belts
- Stainless Steel Mesh Belt (B24)
- Quick Installation
- Safety Interlocks
- Top-Lifting (Easy Access)
- Programmable Recipes
- Low Capital Cost
- Touch Screen Operator Interface

Polar-MP

MULTIPASS FREEZER—IQF



▶ www.cesgroup.com ◀

CES NV | Vlaswaagplein 13, B-8501 Kortrijk, Belgium T +32 56 37 26 66 sales@cesgroup.com

CES INC | 11959 Tramway Dr., Cincinnati, Ohio 45241, USA T +1 513 761 4200 sales@cesgroup-us.com

C | E | S
Freezing Technology

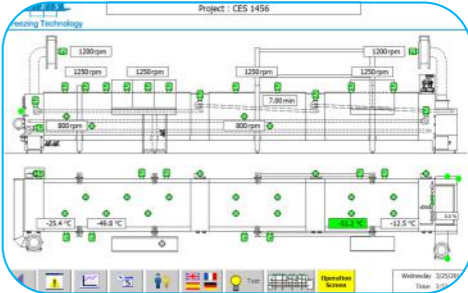
POLAR-MP Multipass

EFFICIENCY
 An optimum cold distribution is obtained by the combination of the recirculation and side wall fans. This makes it possible to increase the belt loading density during the cooling and freezing processes.

COOLING SYSTEM
 Cryogenic cooling is achieved through use of a refrigerant such as liquid carbon dioxide (LCO2) or liquid nitrogen (LIN). CES custom designs despersal systems based on product parameters.



SANITARY
 Top-lifting design offers easy access for cleaning and maintenance, while clean-in-place system utilizes the self-draining design to eliminate standing water and bacterial growth.



INTEGRATION
 Siemens controls are arranged in a user friendly, easy-to-operate HMI and feature "plug-n-play" communication via Ethernet for easy integration into existing lines.



DRIVES
 On multipass linear tunnels, the products move along three superimposed conveyor belts. The speed of each belt is independently controllable.

DURABILITY
 The rugged, in and outside welded stainless steel construction ensures a trouble free operation and an outstanding service life.



CES POLAR-MP MULTIPASS FREEZERS are part of CES' complete line of linear cryogenic tunnel freezers used for continuous food processors in the bakery, red meat, fish, poultry and fruit-vegetable industry. Our standard product lines are capable of fully freezing the widest variety of food products from small items such as patties to the largest items such as bread loaves or large cut meat items. The CES tunnels offer the widest configuration of cryogen spray and circulation fan arrangement available to achieve superior product freezing or chilling while avoiding thermal shock, yield loss or dehydration.